



II HAGER

An American Brand



75th ANNIVERSARY GMT
Owner's Operating Manual

INTRODUCTION

Time is all we have. Live Fearlessly...

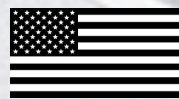
Congratulations on the purchase of CIA's 75th Anniversary Limited Edition GMT watch. Not only have you made a good investment that will serve you reliably for many years to come, but it will also fondly remind you of the Agency and for what it represents, the Nation's first line of defense. The CIA accomplishes what others cannot accomplish and go where others cannot go. CIA's legacy is one of brave individuals dedicated to freedom, fulfilling the Nation's intelligence mission with ingenuity and grit. We are proud to be chosen by the Agency to make this Limited Edition GMT.

The 75th Anniversary Watch was made in collaboration with Hager Watches and Maryland Watch Works, both based out of Hagerstown, MD. Hager is one of the few brands that completely transcends its price category and has been recognized by Wrist Watch Annual, Esquire and Revolution magazines as one of the American brands to own. today's high-end watch pricing excludes the consumer of average means, for whom a \$4,000 watch isn't really an option. A quality watch alternative at an affordable price. We are following the American dream. Our latest models are characterized by style, strength, authenticity and performance, with prices that give you a luxury watch but at an affordable price.

Maryland Watch Works (MWW) is full service watchmaking that offers assembly and repair services to brand partnerships. It is the only watch manufacturer in the country with a state-certified apprenticeship program. Your watch comes with a two year limited warranty and will be serviced by MWW.

Numerous design flourishes have been assembled for 75th Anniversary watch, resulting in a timepiece that is highly contemporary in its appeal. These are features which reveal timepieces that are very much their own master and over time when comparisons fade they will hold their own in the world. We hope you enjoy your timepiece.

Pierre F. Brown



75th Anniversary GMT

If you are in business, a jet setter, or a globetrotter, it's a good idea to wear a watch that tells you what the time is when you are away, but won't let you forget the time at home. In 1955, Pan Am was the first commercial airline to perform a transcontinental flight. The Pan Am pilots found it was difficult to adjust to traveling through different time zones and if they had a watch that could display a second time zone, they would feel less jetlagged. In response to the rapid increase in commercial air travel the iconic GMT wristwatch was born out of a special request from Pan American World Airways.

At that time, intercontinental travel was developing and airliners began to fly swiftly across several successive time zones. Pilots and travelers alike wanted to know the time in various places in the world, such as at the airports of departure and arrival.

If you travel over time zones for both pleasure and business you would want a watch that tells you the time and date in both your destination and at home. Here at Hager we understand that because we travel overseas often ourselves. The 75th Anniversary GMT watch allows the wearer to track 3 time zones at once.

The 24 hour hand (Shaped like a lance) can be independently set from the 12 hour hand, and the rotating ceramic bezel, used in conjunction with the 24 hour hand, gives the ability to display multiple time zones at the same time. Like other luxury brands, the 75th Anniversary uses a 24 click bezel, one for each hour of the 24 hour hand. The rotation system on the 75th allows the bezel to be turned in either direction, with a positive click in each of the 24 hour positions, without any possibility of an intermediate stop or accidental changes. The powerful spring mechanism allows crisp, precise movements, and works reliably over time. Apart from securely indicating home or reference time, the bezel can also be rotated to read a third time zone using the 24-hour hand. To find a watch that is relatively inexpensive with a GMT function is not an easy thing to do. While it may be a simple complication, it is still a complication, and that requires a complicated movement. The 75th edition uses MD7081 GMT movement

There simply aren't that many competitors when you think of its specifications. A) wears very comfortably; B) looks good with a suit and with a casual outfit; C) more water-resistant than other GMT and can actually be worn while diving; and D) its make is impeccable, solid and suitable in almost any setting.

75th Anniversary



CASE

Diameter
42 mm

Material
316L stainless steel
Polished with brushed finish

Bezel
Bidirectional rotatable 24 click graduated bezel
Black/Blue model Ceramic bezel insert engraved numerals and graduations

Waterproofness
Fully threaded crown and caseback offer 300 meters (1,000 feet) of water resistance

MOVEMENT

Functions
24-hour display via additional hand
Second time zone with independent rapid-setting of the hour hand
Instantaneous date at 3 o'clock

Self winding mechanical
40 hour power reserve
28,800 BPH

CRYSTAL

Domed scratch-resistant sapphire crystal with anti-reflective treatment and cyclops underneath the crystal

DIAL

Matte black dial two tiered dial with brass hour markers and Mercedes hands

Highly legible SuperLumiNova appliqués for long-lasting luminescence

BRACELET

Stainless steel, satin finished with polished sides, two-button deployment clasp and fold-out integrated diver's suit extension



LUMINESCENCE

The domed sapphire crystal with matte black dial displays generous hour markers for perfect visibility in dark environments. Fully charged in natural light the luminescence is eye catching as it shifts from blueish- green to a uniform blue as light shifts to darkness and your eyes adjust to the wave length

One advantage the GMT has over other GMT watches is the fact that the markers on the GMT bezel are also luminescent which means you can easily and swiftly read different time zones in low-light conditions on the plane.



MOVEMENT

MWW MD7081

Self-winding mechanical movement

Total diameter

Size: 11.5"

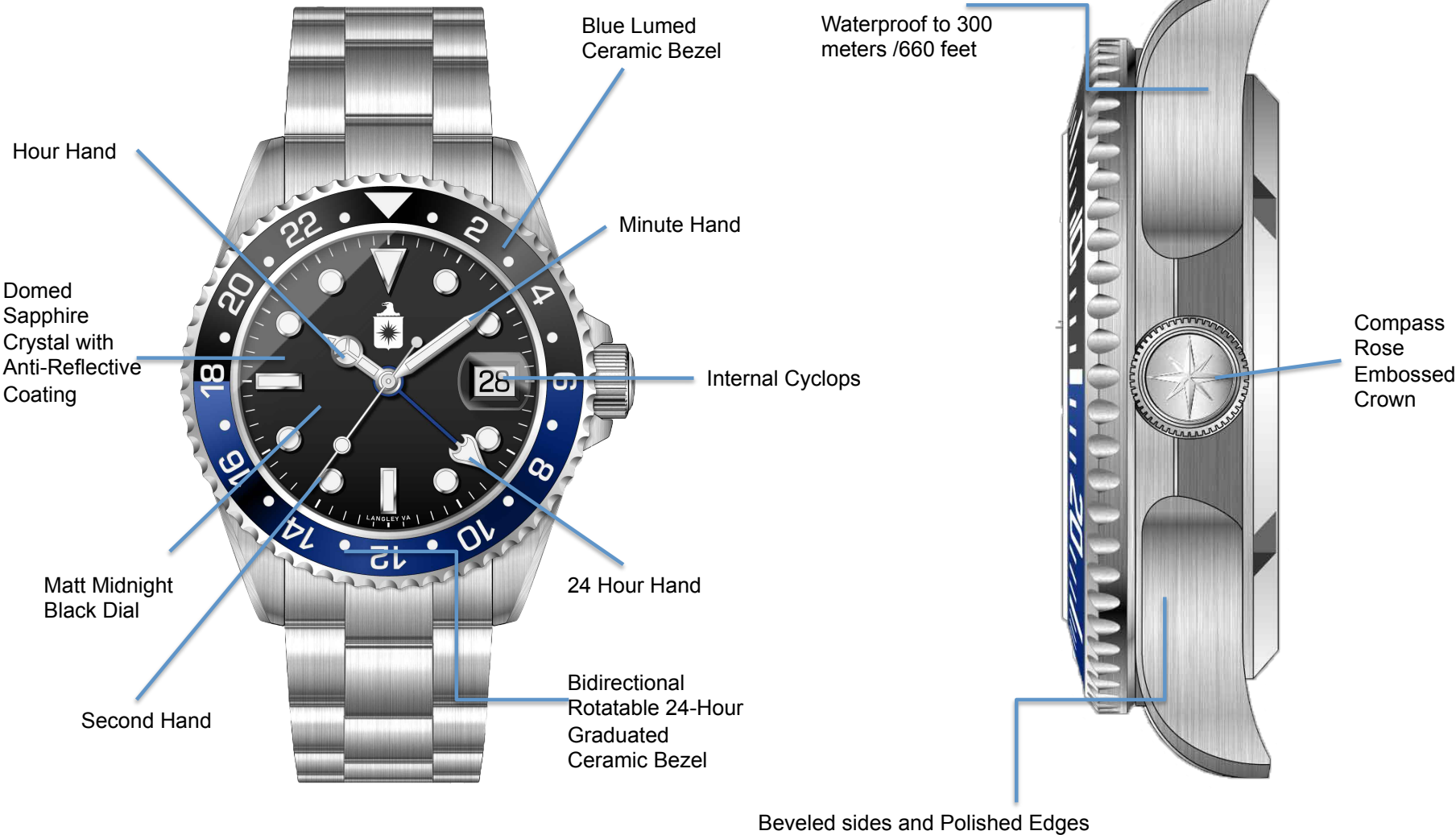
Jewels: 26 Jewels

Power Reserve: 40 Hours

Hz: 4Hz/28'800 vibrations per hour ; Novodiac shock-absorber



CHARACTERISTICS OF THE GMT



GMT TRAVELER OPERATING INSTRUCTIONS



CHARACTERISTICS OF THE GMT TRAVELER

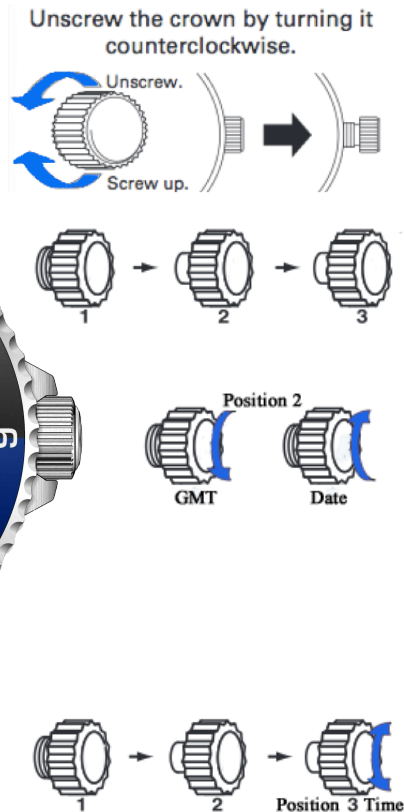
- Your watch operates using power obtained from a mainspring. If the watch is completely stopped, manually turn the crown approximately 20 times to wind up the mainspring to start the watch.
- While loss/gain of a quartz watch is indicated by a monthly or annual rate, accuracy of a mechanical watch is normally indicated by a daily rate (loss/gain per day). Our watches are highly accurate, however If your watch is running a little fast OR a little slow, we suggest the following:
When you take your watch off at night, lay it in a position that assists in adjusting the time without the help of a specialist.
 - If your Hager is a little slow during the day, lay it flat, with dial up as this position tends to gain a few seconds during the course of the night.
 - If your Hager is running a few seconds fast, lay it in a vertical position with the crown down as this position will tend to lose a few seconds per night.
 - If your Hager is running more than a few seconds fast per day, lay it in a vertical position with the crown up. This position tends to lose a few more seconds per night that the previously suggested position.
- Normal usage accuracy of a mechanical watch varies according to conditions of use (time period that the watch is worn on the wrist, temperature environment, hand movement, and winding state of the mainspring).
- When the watch is affected by strong magnetism, it temporarily gains or loses time. If the watch encounters a strong magnetic field, the parts of the watch may be magnetized. In this case, repairs such as removal of magnetism are required. Do not leave the watch in place where it will be subjected to strong magnetism (for example, near television sets, loudspeakers or magnetic necklaces) or static electricity. Contact us if this should happen.
- The Hager Professional Series comes with a two year limited warranty. See our website www.HagerWatches.com for more details.

GMT TRAVELER OPERATING INSTRUCTIONS

QUICK SET INSTRUCTIONS IF YOU'RE AN EXPERT



PLEASE BE ADVISED: engaging the date function when dial hands are between 8pm - 2am can cause serious damage to the calendar gears of the internal movement as the watch gearing will already be aligning itself to change the date. It is therefore vital to avoid adjusting the calendar or moving the time backwards during this period. Such damage is not covered under warranty. You must advance the time past midnight before you can set the date again.



After an extended period of non-use, the movement must be set in motion by winding the crown clockwise in its normal position approximately 20 times.

Flush- The crown is fully screwed-down. The watch is completely sealed and the movement protected.

(1st Position) For Manual Winding- Unscrew the crown counterclockwise until it completely disengages from the threads. Once there, begin to wind the crown clockwise about 25-30 times away from you, do not go back and forth with the crown. This is only required if you have not worn the watch for 1-2 days.

(2nd Position) Setting the GMT and Date- Unscrew the crown counterclockwise until it completely disengages from the threads (the winding position). With your thumb and forefinger slightly pull on the crown to reach the 2nd extended position. To set the GMT function, wind the crown downwards, the GMT hand will click.

To set the date, wind the crown upwards (towards 12 o'clock) until you reach the appropriate date. When completed, lightly push and screw the crown tightly back into place.

(3rd Position) Setting the Time- Unscrew the crown counterclockwise until it pops out from the side (the winding position). Extend the crown past the 2nd position, which is fully extended from the side. To set the time, wind the crown clockwise or counterclockwise until you reach the appropriate time. When completed, lightly push the crown back into position 1 and gently screw the crown in clockwise direction, then tighten it again until you feel some resistance. **Do not force! You must always ensure the crown is fully tightened before any use in water.**

HOW TO USE THE GMT (Detailed Instructions)

Second Time Zone

The second, independent hour hand (A) makes a complete sweep of the dial in 24 hours. Its position relative to the 24-hour markings inscribed on the dial rim can serve as a second timezone indication. The table (shown next page) can be used to calculate any time difference.

Unscrew the water-resistant crown in a counterclockwise direction.

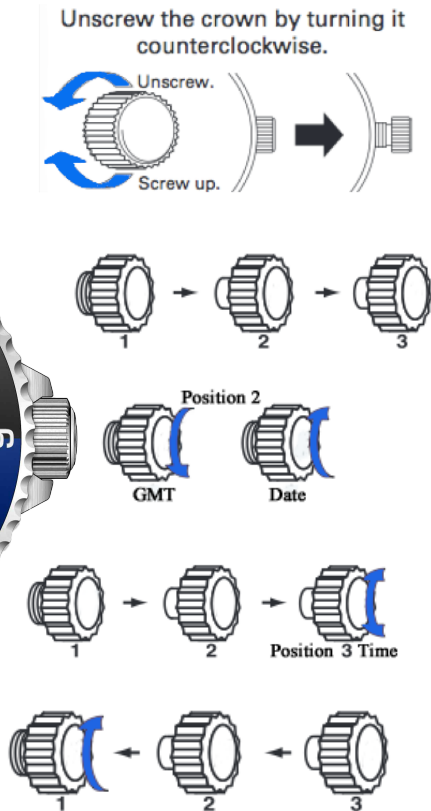
The hand is reset by pulling the crown out of position 2 and rotate the hand counterclockwise (down towards the 6 o'clock position) until you have reached the desired time indication.

“The Easy Way to set the GMT”

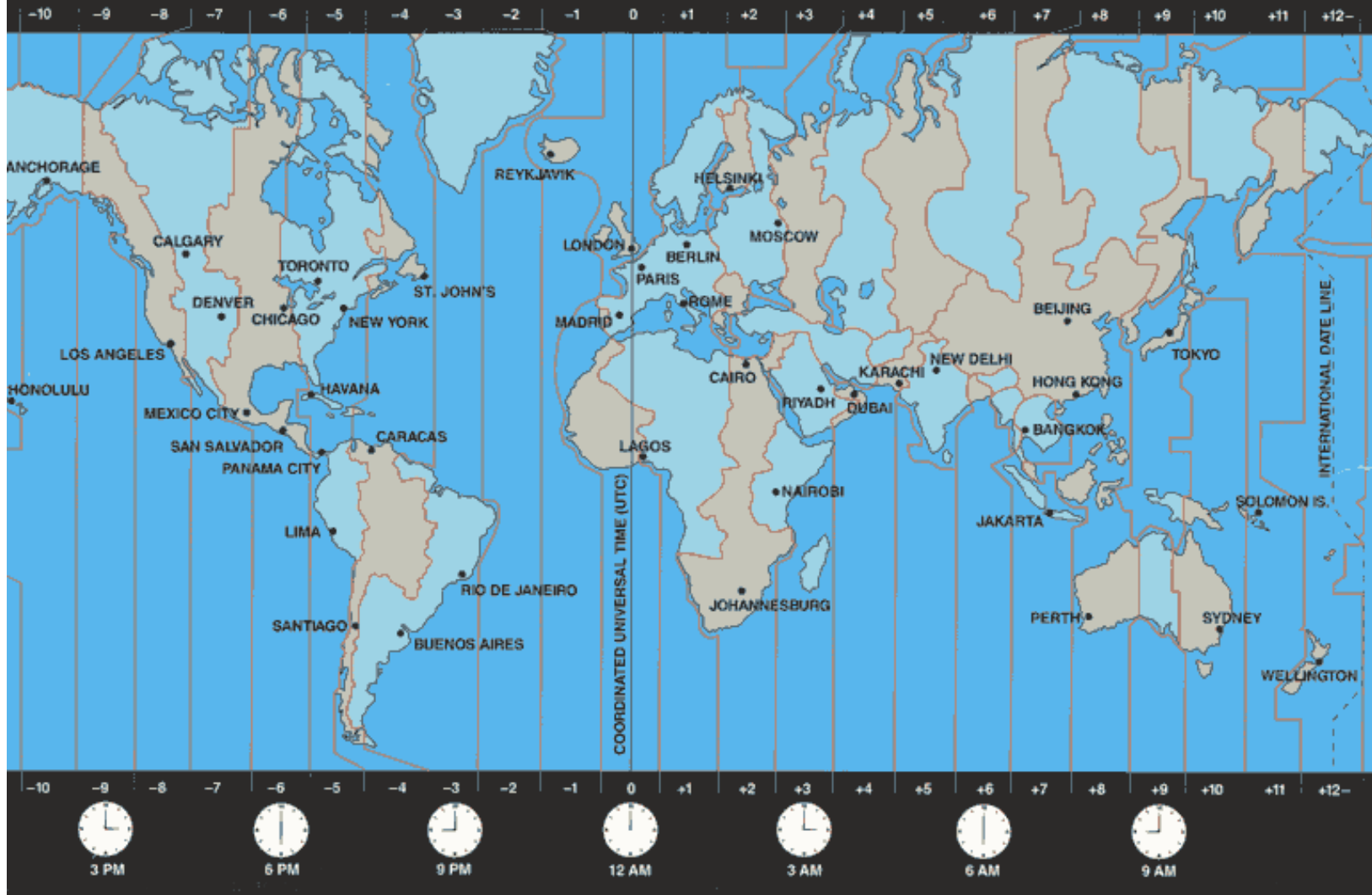
Let's assume you just landed in London and the time is 0900hrs (9:00 am) and you want to keep track of the back home. You know the current time in London is 1400hrs (2:00pm) which is +5 hrs GMT (during DST not BST). So the easiest way to set the GMT is:

1. Advance the hour hands forward to midnight until the time reads 0000hrs (12pm) and the calendar date advances (leave the hands directly lined up at the 12:00 position)
2. Push the crown back to Position 2 and adjust (rotate) the GMT hand to the correct position that corresponds with 5 o'clock on the bezel insert (not the watch dial).
3. Now pull the crown out to position 3 and rotate the hands to the correct time local time.
4. Push the crown back to position 2 and rotate the crown upwards (towards 12) to change the date to the current date.
5. Pull the crown back out to position 3 and then push the crown back to position 1 (this ensures that the crown fully seats back into position 1. Now Press it in gently, and rotate the crown turning it gently in a clockwise direction, then tighten it again until you feel some resistance. Do not force!

PLEASE BE ADVISED: engaging the date function when dial hands are between 8pm - 2am can cause serious damage to the calendar gears of the internal movement as the watch gearing will already be aligning itself to change the date. It is therefore vital to avoid adjusting the calendar or moving the time backwards during this period. Such damage is not covered under warranty. You must advance the time past midnight before you can set the date again.



STANDARD TIME ZONES OF THE WORLD

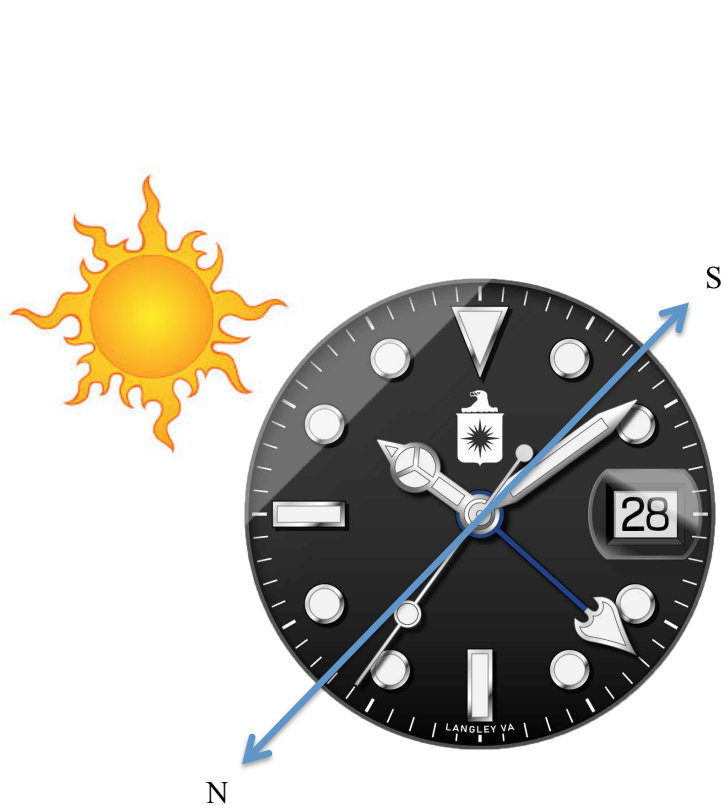


USING THE GMT TRAVELER 24H BEZEL



The bidirectional rotating bezel features a 24-hour graduation that may be used as a 3rd timezone. According to the hour previously selected as the 2nd timezone, simply line up the hour in the 3rd timezone indicated on the bezel with the hand (A).

USING YOUR GMT AS A SUN COMPASS



In the Northern hemisphere

Point the hour hand precisely towards the sun. In relation to the watch dial, the point located midway between the current time and 12 o'clock indicates the South, the North being exactly opposite.



In the Southern hemisphere

Point the hour-marker located at 12 o'clock on the dial precisely towards the sun. In relation to the watch dial, the point located midway between the current time and 12 o'clock indicates the North, the South being exactly opposite

CARE AND PRECAUTION

- Each Hager timepiece is designed and manufactured to the highest of standards. Unlike most other mechanical objects, a watch operates non-stop. In order to ensure optimal performance and longevity from your Hager timepiece, please review the simple guidelines for care and precautions.
- CARE
- Clean your watch with a soft cloth and water only. Do not submerge your watch under water unless it is water rated.
- After saltwater use, rinse watch under tap water and wipe dry with a soft cloth.
- Metal bracelets should be cleaned periodically. Clean with a soft brush dipped in mild soapy water and dry thoroughly with a soft cloth.
- We advise having your timepiece serviced every 18 – 24 months to ensure long use and trouble free operation.
- PRECAUTIONS
- Your timepiece is a complex integration of parts and components brought together by skilled craftsmen. There are certain actions or environmental situations that may damage or impede your timepiece's ability to perform optimally.
- It is important to avoid the following conditions: extreme heat or cold, as well as prolonged periods of exposure to direct sunlight, exposure to wet conditions that exceed your timepiece's water rating. (See caseback and chart).
- Your timepiece should not be affected by magnetic fields generated by household items such as televisions and stereos, but avoidance of other strong electric fields or static electricity, which may interrupt mechanism, is suggested. It is also important to avoid extreme shock or impact.



© **Hager** Watches
36 South Potomac St.
Suite 204
Hagerstown, MD 21740

HAGERWATCHES.COM
Hager.watches@gmail.com

Maryland Watch Works (Service Center)
14 N. Potomac Street
Suite 3B
Hagerstown, MD 21740

MARYLAND WATCH WORKS.COM
Info@MarylandWatchworks.com

*HAGER reserves the right to modify the models illustrated in
this catalogue at any time.*